



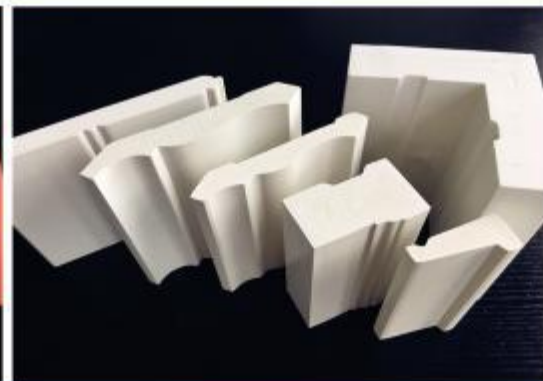
GREEN PLASTICS SPECIALIST

PVC Sheet, Moulding & Trim Board
Specialty Manufacturer

Product Brochure



PVC SHEET



PVC MOULDING



PVC TRIM BOARD

www.botoplastics.com

CONTENT

About BOTO

1

Manufacturing capabilities

2

Quality control system

3

Products: PVC sheet

4

Typical applications

5

Typical applications

6

Typical properties

7

Products: PVC trim board

8

Products: PVC trim board

9

Products: PVC mouldings

10

PVC crown moulding

11

PVC casing moulding

12

PVC sill & drip moulding

13

Beadboard & Column wrap

14

Installation guide

15

Warranty

16

Storage & package

17

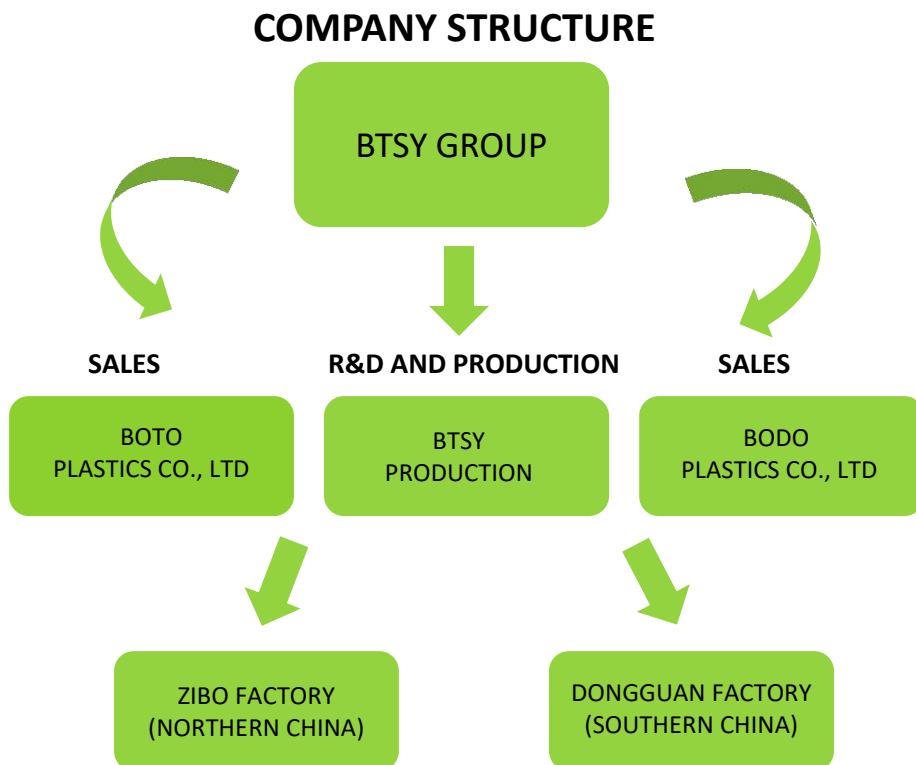
ABOUT BOTO

Boto Plastics is one of China's leading manufacturers for PVC sheet, trim board and mouldings. As a part of BTSY Group, we have two factories throughout southern and northern China. For over 10 years, we have been an innovative worldwide provider of PVC substrate solutions for a wide range of customers and markets.

The sheets are designed to suit a diverse range of applications in various markets: construction, architectural projects, sign and display, furniture making and industrial applications. Efficient solutions are offered as part of the company's advanced products and services bundle for the construction and sign markets.

Specializing in construction and industrial applications, Boto Plastics developed a full range of products to meet your specific needs. Our sales office is in Guangzhou, our two factories cover over 100,000sqm with top brand facilities like Cincinnati Extruder.

"Green Plastics Specialist!" Welcome to Boto Plastics for a complete support.



MANUFACTURING CAPABILITIES

- Production areas and warehouses cover 100,000sqm
- Total 29 extrusion lines, shortest lead time
- Monthly output reaches 5000 Tonnes
- Top brand facilities Cincinnati Extruders produce top quality products
- Raw material auto-mixing system ensure consistent quality

Factory areas



Production facilities

QUALITY CONTROL SYSTEM

BOTO R&D team include raw material quality control department and products analysis & development center, covering an area of about 300sqm, equipped with over 30 sets of the latest equipment.

We not only inspect raw material from different batches, but also take care of quality during production, packing and loading. The laboratory also focuses on the research of the relationship between structure and performance, and conducts this basic research together with universities.



CERTIFICATE OF REGISTRATION
 Certificate No.: 117 13 EU 0273 R04
 This is to certify the environmental management systems of
Shandong Botuo Plastic Industry Co., Ltd.
 Organization code: 79730292-9
 Location: (North Taixue Road, West Wenhé Road) Economic Development Zone, Yiyuan County, Zibo, Shandong
 has been assessed and registered as meeting the requirements of GB/T24001-2004/ISO14001:2004
 Scope of approval:
 The Related Environmental Management Activities of Production and Sales of PVC Foam Board for Shandong Botuo Plastic Industry Co., Ltd. Located in (North Taixue Road, West Wenhé Road) Economic Development Zone, Yiyuan County, Zibo, Shandong

Approved Date: 27 Apr 2015
 Expiry Date: 26 Apr 2018

Signed by: [Signature]

Logo: CAS, IAF, ACCU

CERTIFICATE OF REGISTRATION
 Certificate No.: 117 13 QU 0264-04 R04
 This is to certify the quality management systems of
Shandong Botuo Plastic Industry Co., Ltd.
 Organization code: 79730292-9
 Location: (North Taixue Road, West Wenhé Road) Economic Development Zone, Yiyuan County, Zibo, Shandong
 has been assessed and registered as meeting the requirements of ISO9001:2008
 Scope of approval:
 Production and Sales of PVC Foam Board

Approved Date: 27 Apr 2015
 Expiry Date: 26 Apr 2018

Signed by: [Signature]

Logo: CAS, IAF

Remarks:

- 1 mg/kg = 1 ppm = 0.0001%
- MDL = Method Detection Limit
- ND = Not Detected (< MDL)
- * = Not Regulated

RoHS Directive (EU) 2015/863 amending Annex II to Directive 2011/65/EU

Test Method:

- (1) With reference to IEC 62321-3:2013, determination of Cadmium by ICP-OES.
- (2) With reference to IEC 62321-4:2013, determination of Lead by ICP-OES.
- (3) With reference to IEC 62321-4:2013, determination of Mercury by ICP-OES.
- (4) With reference to IEC 62321-2:2008, determination of Hexavalent Chromium by Cobometric Method using UV-VIS.
- (5) With reference to IEC 62321-4:2013, determination of PBBs and PBDEs by GC-MS.
- (6) With reference to IEC 62321-4:2013 (11/321/CO), determination of phthalates by GC-MS.

Test Item(s)	Unit	Limit	MDL	ND	
Cadmium (Cd)	mg/kg	100	mg/kg	2	NO
Lead (Pb)	1,000	mg/kg	2	NO	
Mercury (Hg)	1,000	mg/kg	2	NO	
Hexavalent Chromium (Cr(VI))	1,000	mg/kg	2	NO	
Sum of PBBs	1,000	mg/kg	-	NO	
Monobromophenyl	-	mg/kg	5	NO	
Dibromophenyl	-	mg/kg	5	NO	
Tribromophenyl	-	mg/kg	5	NO	
Tetrabromophenyl	-	mg/kg	5	NO	
Pentabromophenyl	-	mg/kg	5	NO	
Hexabromophenyl	-	mg/kg	5	NO	
Heptabromophenyl	-	mg/kg	5	NO	
Octabromophenyl	-	mg/kg	5	NO	
Nonabromophenyl	-	mg/kg	5	NO	
Decabromophenyl	-	mg/kg	5	NO	
Sum of PBDEs	1,000	mg/kg	-	NO	

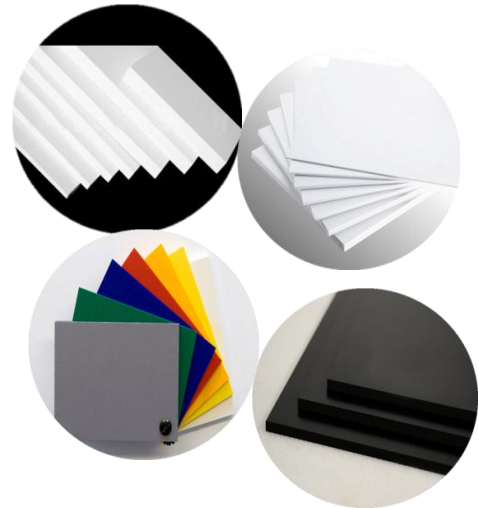
Logo: BUREAU VERITAS








PRODUCTS: PVC SHEET

Our PVC Sheet (white & colored) is lightweight, versatile and durable which is ideal for use in many applications such as advertising, cabinet making and construction. It is easily handled, cut and fabricated by using conventional tools and equipments, and can be printed, painted or laminated. The improved surface hardness ensures reliable performance and excellent results. The robust surfaces and high durability make it also suitable for interior and exterior applications.

At a glance

- ◆ Universal sheet for all display applications
- ◆ Smooth surface finish with high surface hardness
- ◆ Excellent printing and laminating properties
- ◆ Easy processing
- ◆ Wide range of sheet sizes and thicknesses
- ◆ Special formats available on request
- ◆ Protection film available under request
- ◆ Fire behavior according to:
 - EN 13501-1:2007+A1:2009: B-s1, d0
 - NF P 92-507:2004: M-1, M-2
 - UL 94-2011: V-0



Color		Dimensions(mm)			Thickness Availability
		1220 × 2440	1560 × 3050	2050 × 3050	
White		1-30	1-20	1-20	
Red		3			
Yellow		3			
Blue		3			
Green		3			
Grey		3-20			
Black		3-20			

TYPICAL APPLICATIONS

Advertising

- Lightweight and durable signs
- Displays
- Exhibition stands
- POS/POP applications
- Direct printing
- Mounting
- Lettering
- Fabrication



◆ Signs



◆ Display



◆ UV flat-bed printing

◆ Silk-screen printing



◆ Photo mounting



◆ Exhibition stands

◆ Lettering



◆ POS/POP applications

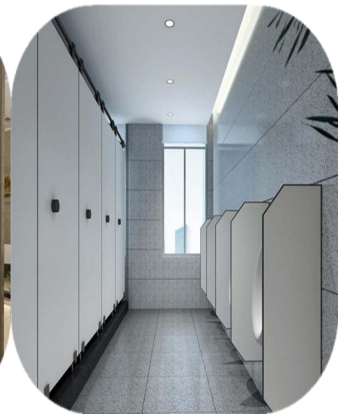
◆ Digital cutting & fabrication



TYPICAL APPLICATIONS

Construction & Furniture

- Interior and exterior decoration
- Shop fitting
- Shelf
- Kitchen and bathroom cabinets
- Formwork
- Shop fitting
- Protector case
- Bus flooring



◆ Interior and exterior decoration

◆ Partition



◆ Shelf

◆ Kitchen and bathroom cabinets

◆ Marine furniture



◆ Formwork

◆ Bus flooring

◆ Shop fitting

◆ Protector case

TYPICAL PROPERTIES

Property	Item	Method	Unit	Value	
Mechanical	Thickness		mm	10-30	
	Density	ASTM D792	g/cm ³	0.55±0.03	
	Tensile strength	Lengthways	ASTM D638	kg/cm ³	110
		Crosswise			80
	Flexural strength	Lengthways	ASTM D790	kg/cm ³	240
		Crosswise			180
	Compressive strength	ASTM D695	kg/cm ³	100	
	Compressive stress for strain of 30%	ASTM D695	kg/cm ³	180	
	Modulus of elasticity	ASTM D638	kg/cm ³	10000	
	Hardness	ASTM D676	Shore D	50-80	
Impact strength(+20°C)	ASTM D256	kg.cm/cm ³	1.5		
Thermal	Coefficient of linear thermal expansion (from-30°C to 50°C)	ASTM D696	mm/m°C	0.07	
	Heating deflection temperature	ASTM D648	°C	55	
	Thermal conductivity(from 0°C to 60°C)	DIN 52616	w/mk	0.03-0.07	
	Rate of heat transfer	DIN 52616	w/(m2k)	1.2-3.0	
Electrical	Volume resistivity	ASTM D257	Ω.cm	2.0×10 ¹⁴	
	Surface resistance	ASTM D257	Ω	9.0×10 ¹⁴	
	Dielectric strength	JI6911	kv/cm	48	
Others	Rw	DIN 52210/84	dB	35	
	Water absorption after 7 days	ASTM D570	%	0.5	
	Fire behaviour	UL-94	/	V-0	

ROHS DIRECTIVE

Our products meet the requirements of the ROHS directives of hazardous substances. There is no lead, mercury, cadmium, hexavalent chromium, polybrominated biphenyls (PBBs), polybrominated diphenylethers (PBDEs), formaldehyde, CFCs, asbestos, plasticizer nor silicone.

ISO9001:2008 APPROVED

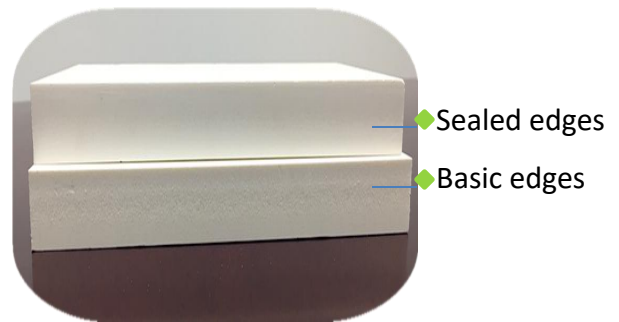
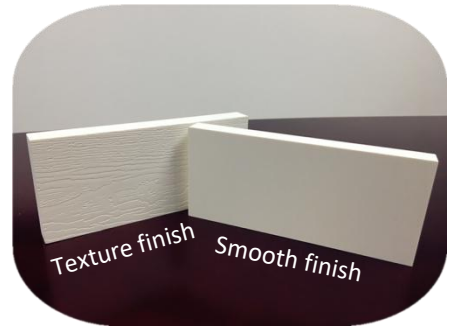
We have introduced ISO9001:2008 since 2012 and ISO14001: 2004 since 2013. Strictest quality control system has been applied in BOTO, all we do it to ensure the consistent top quality.

PRODUCTS: PVC TRIM BOARD

BOTO Trim is easy to work similar to wood, but much less maintenance than wood. BOTO Trim is available with a smooth finish on both sides, or texture on one side and smooth on the other. BOTO PVC trim is high-performance trim product, it can be sealed edges based on your requirement. Over time, dirt will collect on the edges but a sealed edge allows the dirt to be washed off easily.

FEATURES

- Low Maintenance, long-lasting
- Easy to work with
- Water, moisture and termite proof, fire retardant
- Can be cut, nailed, drilled, glued, painted just like wood
- No need to be painted, unless desired. When use outdoor, painting is recommended for maintaining color consistency for longer time
- Lifetime never rot
- Light weight, high-cell density
- Sealed edges available



ACTUAL DIMENSION

PVC TRIM SMOOTH&TEXTURE	Thick ness	Width							Length						
		2 ½"	3 ½"	4 ½"	5 ½"	7 ¼"	9 ¼"	11 ¼"	15 ¼"	8'	10'	12'	16'	18'	20'
	3/8"	●	●	●	●	●	●	●	●	●	●	●	●	●	●
	1/2"	●	●	●	●	●	●	●	●	●	●	●	●	●	●
	5/8"	●	●	●	●	●	●	●	●	●	●	●	●	●	●
	3/4"	●	●	●	●	●	●	●	●	●	●	●	●	●	●
	1"	●	●	●	●	●	●	●	●	●	●	●	●	●	●

PRODUCTS: PVC TRIM BOARD



◆ Trim board options on corridors and balconies



◆ When eave meet trim board

◆ Garage door trim



◆ Anything wood can do, pvc trim board can do better

◆ Window & door trim

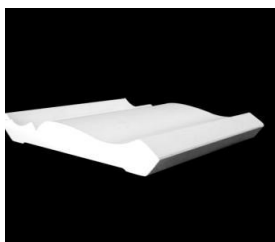
PRODUCTS: PVC MOULDINGS

BOTO MOULDINGS are the perfect replacement of wood, with features of eco-friendly, lifetime never rot, low maintenance, moisture & termite proof, easy to install, does not promote mold or mildew, save time and labor with high energy efficiency, not easy to scratch, no painting required unless desired. When you think of moulding, we are an enduring solution for all your moulding need.



PRODUCTS: PVC CROWN MOULDING

Crown Mouldings provide a variety of application and aesthetic options. Traditionally used at the junction of a wall and ceiling, they can also be combined with other profiles to create classic build-outs and ornate decorative effects along the rake, above windows and doors, and at the capital and base of columns.



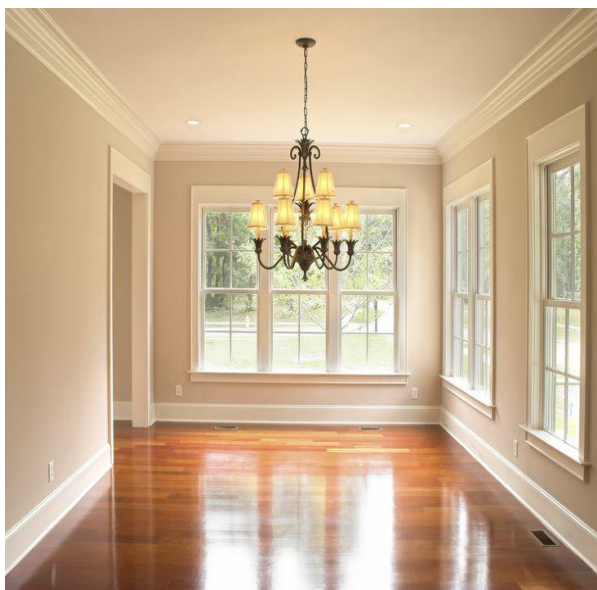
Crown
BTP49
9/16" × 3-5/8"



Crown
BTP47
11/16" × 4-5/8"

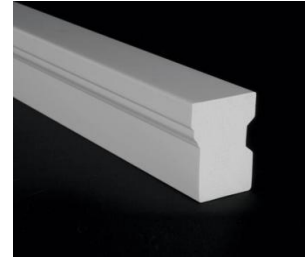


Rams crown
BTP068
1-13/32" × 2"



PRODUCTS: PVC CASING MOULDING

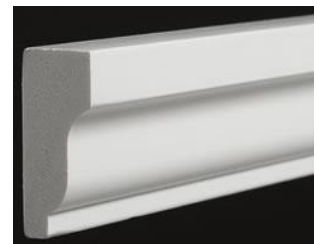
Casing profiles are decorative mouldings typically used flush against a wall, door or window to create surrounds. They can be used as a single moulding profile or combined with other profile styles to dramatically transform window and door aesthetics.



Brick Mould
BTP180
1-1/4" × 2"



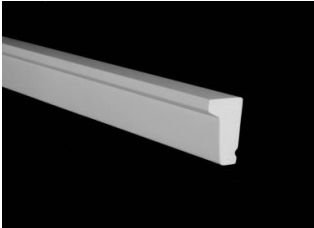
Base Cap
BTP164
11/16" × 1-1/8"



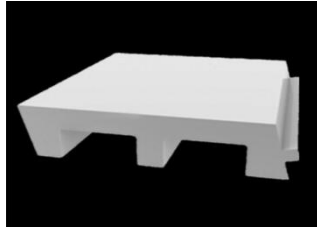
Shingle moulding
BTP210
11/16" × 1-5/8"

PRODUCTS: PVC SILL&DRIP MOULDING

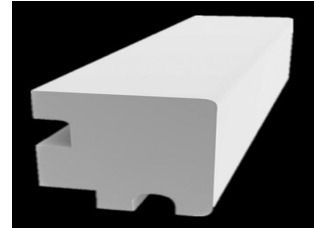
Sill & Drip profiles can be used as a brick ledge or water table to separate two different material veneers. These profiles also offer architectural detail and assist with water management around doors, windows and cladding.



Drip Cap
BTP197
11/16" × 1-5/8"



Sill
BTP948
1-1/4" × 4-15/16"

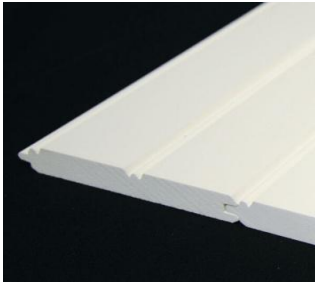


Sill nose
BTP937
1-3/8" × 1-5/16"



PRODUCTS: BEAD BOARD&COLUMN WRAP

Bead board is the perfect choice for porch ceilings and soffit applications, as well as for wainscot trim in bathrooms, laundry rooms or other high moisture interior areas.



Bead board
BTP001
1/2" × 5-1/8"



Column wrap is virtually impervious to moisture, mold and insects, does not require paint for protection, but easily accepts paint, quick and easy installation. It always comes with bed moulding and base cap moulding which makes it a perfect look.



Contact us now to explore more profiles or send us your design for our development references !

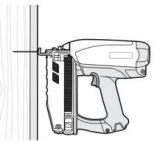
INSTALLATION GUIDE

INSTALLATION GUIDE: BOTO Trim&Moulding products can be easily installed using standard woodworking equipment.



◆ Cutting

Using standard woodworking equipment. For power miter saws, carbide tooth blades are recommended. Do not use fine-tooth metal-cutting blades, do not use plywood or metal blades because the kerf of the blade is too thin and can cause heat buildup in the material. To maintain a smooth edge, support the trim across its entire length when you cut it.



◆ Drilling

Do not use bits made for rigid pvc, avoid heat buildup from excessive friction, and remove the shavings from the drill hole frequently.



◆ Cleaning

Use a soft bristle brush and a bucket of soapy water to remove normal dirt and grime. For especially stubborn stains, use a cleaner suitable for pvc products. Your local building materials retailers can supply several different brands, better test any cleaners before use.

◆ Gluing

Temperature variation will cause pvc trim board and mouldings to expand and contract. To prevent open miter joints, we highly recommend gluing all joints using a quality instant glue or pvc cement, always test adhesive brands before using. You should use a combination of glue and mechanical fasteners, such as “glue and screw”, only glue is not enough to ensure a long-term bond.



◆ Painting

BOTO Trim and Moulding products does not require painting but, like any pvc product, it will weather over time and painting will enhance these beautiful products and help them maintain color consistency for many years. 100% acrylic latex paint is recommended.



◆ Nailing

Stainless steel or hot-dipped galvanized nails or screws are recommended.



WARRANTY

LIMITED LIFETIME WARRANTY

- Guangzhou Boto Plastics Co.,Ltd(“BOTO”) warrants to the original purchaser that each BOTO trim board and moulding(“product”) will be free from manufacturing defects that cause the BOTO Product to delaminate, rot, corrode or swell excessively from moisture for a period of thirty(30) years from the date of the original consumer purchase. Each Consumer Purchaser of BOTO Product shall have sole responsibility for making determinations as to the suitability, effectiveness, and safety of any particular use or application of the BOTO Product. Building code regulations vary from area to area, each purchaser of the product should consult local building and safety codes for specific requirements.
- This limited warranty applies and is effective only if the product is subjected to normal use and exposure. This warranty does not provide protection against any failure of, defect in or damage to BOTO Product caused by situations beyond normal exposure conditions, including but not limited to the following: intentional or unintentional misuse, abuse, neglect, or improper handling or storage; impact of foreign objects; earthquake, lightning, ice, fire, tornado, windstorm, flood, among others or any other acts of God; improper installation of the BOTO Product or its structural supports, use of incompatible accessories. or other products that cause a product defect or failure to occur; pollution, acid rain, application of harmful chemicals or vapors applied to the product. Or ordinary and expected weathering due to exposure to the elements(for purposes of this limited warranty, defined as fading, chalking or darkening of the surface of the product due to exposure of ultraviolet light and extremes of atmospheric conditions that are unique to and may vary in each geographic location). This limited warranty does not cover painted finishes or coating applied to the product by the original purchaser or any third party.
- The claimant shall provide a written description of the claimed manufacturing defect together with original proof of purchase within 30 days of noticing the defect, or this limited warranty shall automatically become null and void.
- Boto reserve the right to investigate any claim hereunder.

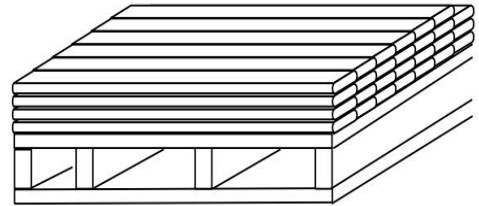


STORAGE & PACKAGE

Storage

- BOTO PVC trim, sheet and Moulding products should be stored on a flat and level surface. PVC products are more flexible than wood, they may deform on uneven surfaces. Ensure that storage areas, as well as all framing and substructures, are flat and level to minimize uneven surfaces .

- Products are shipped with a protective covering. If covering has been removed, take care to keep product free of dirt and debris at jobsite. If product gets dirty, clean after installation. Care should be taken to avoid damage to the ends, edges and surfaces.



Package

BOTO plastics provide several packings for sheet, trim board and mouldings, to make sure the goods are perfectly protected and easy for loading&unloading.



Boto Plastics Co.,Ltd

B1-806 Wanda Plaza, No. 2707 Kaichuang
Avenue, GETDD, Guangzhou, 510530
China

Phone +86 20 2816 8611

Fax +86 20 2802 9589

Email info@botoplastics.com

Zibo Factory

Yiyuan Economic Development Zone
Zibo City, Shandong Province
China

Dongguan Factory

Tinghuan Road, Houjie Town
Dongguan City, Guangdong Province
China



Quality products
Outstanding service
Always being better



[View Website](#)

Due to a policy of continuous improvement, specifications may change without notice.

BOTO PLASTICS 2017